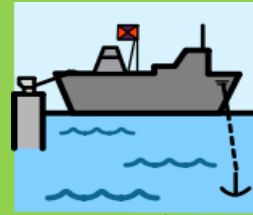


# Year Six Autumn Term What can influence your destiny?

## Geography Knowledge



socio-economic



port



industrial areas



developed



developing



trade



economy



goods



natural resource



human feature



physical feature



map



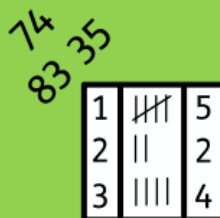
atlas



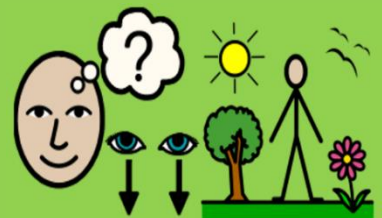
qualitative



quantitative



data



fieldwork

# PSHE Knowledge



conflict



celebration



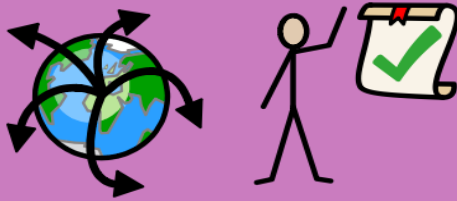
actions



globally



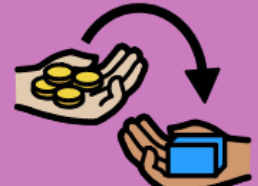
empathise



universal rights

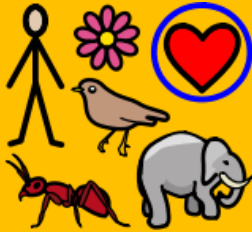


fair terms



trade

# Science Knowledge



living things



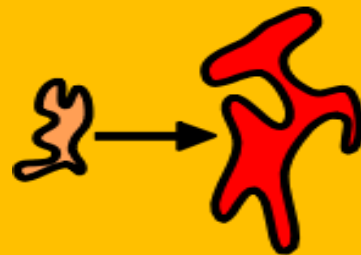
change



fossils



evolution

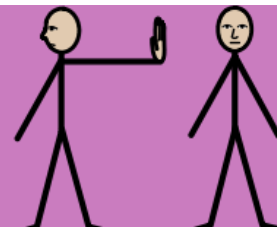


adapt

# RE Knowledge



persecution



discrimination