

Year Five Autumn Term  
The Earth is changing – so why should we?

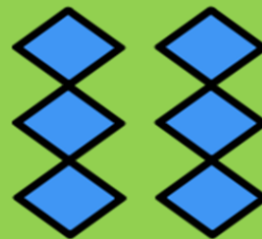
Geography Knowledge



North America



South America



similar



different



climate



physical feature



climate zone



climate change



deforestation



biomes



regions



vegetation belt



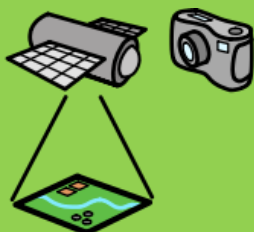
topographical



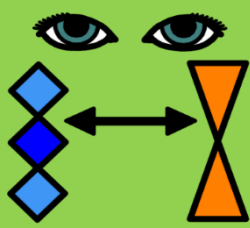
land use



aerial  
photographs



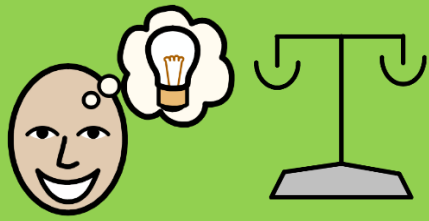
satellite images



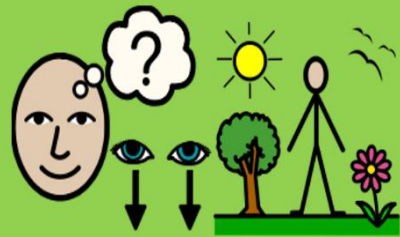
comparison



judgement



balanced opinion



fieldwork

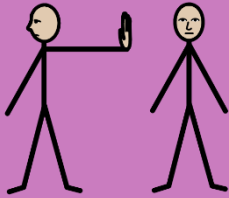
## PSHE Knowledge



citizen



empathise



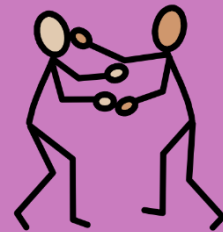
prejudice



change



culture



conflict

## Science Knowledge



lifecycle